

October 2023 New Product Introduction

Hardware PM Team

10.06.2023



IP Audio System (IPAS)

1. Introduction

- 1-1. IP Audio System
- 1-2. Security & Safety
- 1-3. Scheduled Background Music (BGM)
- 1-4. Scheduled Announcement
- 1-5. Stylish design for various decors

1. Introduction

1-1. IP Audio System

IP Speakers

Ceiling Speaker | SPA-C110B (Black) / SPA-C110W (White)

Wall Speaker | SPA-W100B (Black) / SPA-W100W (White)

Horn Speaker | SPA-H100B (Black) / SPA-H100W (White)

Pendant Speaker | SPA-P100B (Black) / SPA-P100W (White)

Audio Module

SPA-D1000


Audio Server

SPA-S1000



1. Introduction

1-2. Security & Safety

 Motion Detection

 Step away from the fence!


For Fence Line / Perimeter

The Solution to stop a situation before it happens

1. Introduction

1-2. Security & Safety



 Please keep your distance

 Social Distance Alarm



For ATM

Real-time prevention from unwanted activities

1. Introduction

1-2. Security & Safety

For Shops / Department Stores

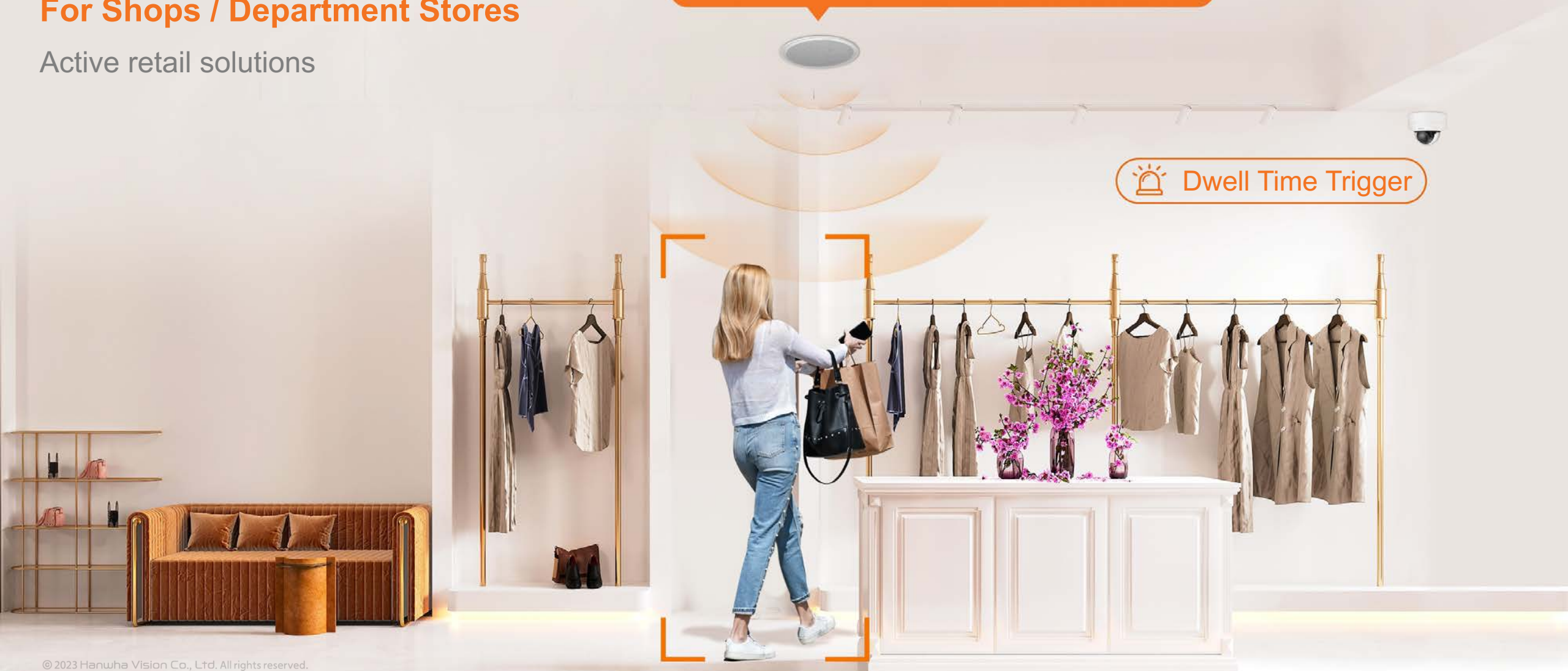
Active retail solutions



Welcome to Carley's Fashion, a staff member will be with you shortly



Dwell Time Trigger



1. Introduction

1-3. Scheduled Background Music (BGM)

For Commercial buildings

The solution to deliver Background Music on a schedule based on day, week and year
Different playlists and volumes for different groups of IP Speakers

 PLAY LIST THE FOUR SEASONS



Bookstore

 PLAY LIST NOCTURNE(CHOPIN)



Restaurant

 PLAY LIST DANCE TO THE MUSIC



Clothing Store

1. Introduction

1-4. Scheduled Announcement

To Staff, Students, and Customers

Deliver regularly scheduled announcements

Make Announcements with pre-programmed Text To Speech (TTS) or pre-recorded voice messages

07:00 08:00 09:00 10:00 11:00 12:00 13:00 14:00 15:00 16:00 17:00 18:00



Lobby 7:00-9:00

Good Morning! Welcome to The Hotel Lounge.
Enjoy your stay!



Office 12:00-14:00

Good afternoon and welcome to Hanwha Vision,
Enjoy your lunch!



Meeting room 17:00-18:00

Today is Family day, please leave the office early to
enjoy time with your family.

1. Introduction

1-5. Stylish Design for Various Decors

IP Pendant Speaker for both Audio and Decor

IP Pendant speakers with stylish design are suitable for various decors such as restaurants and retail stores

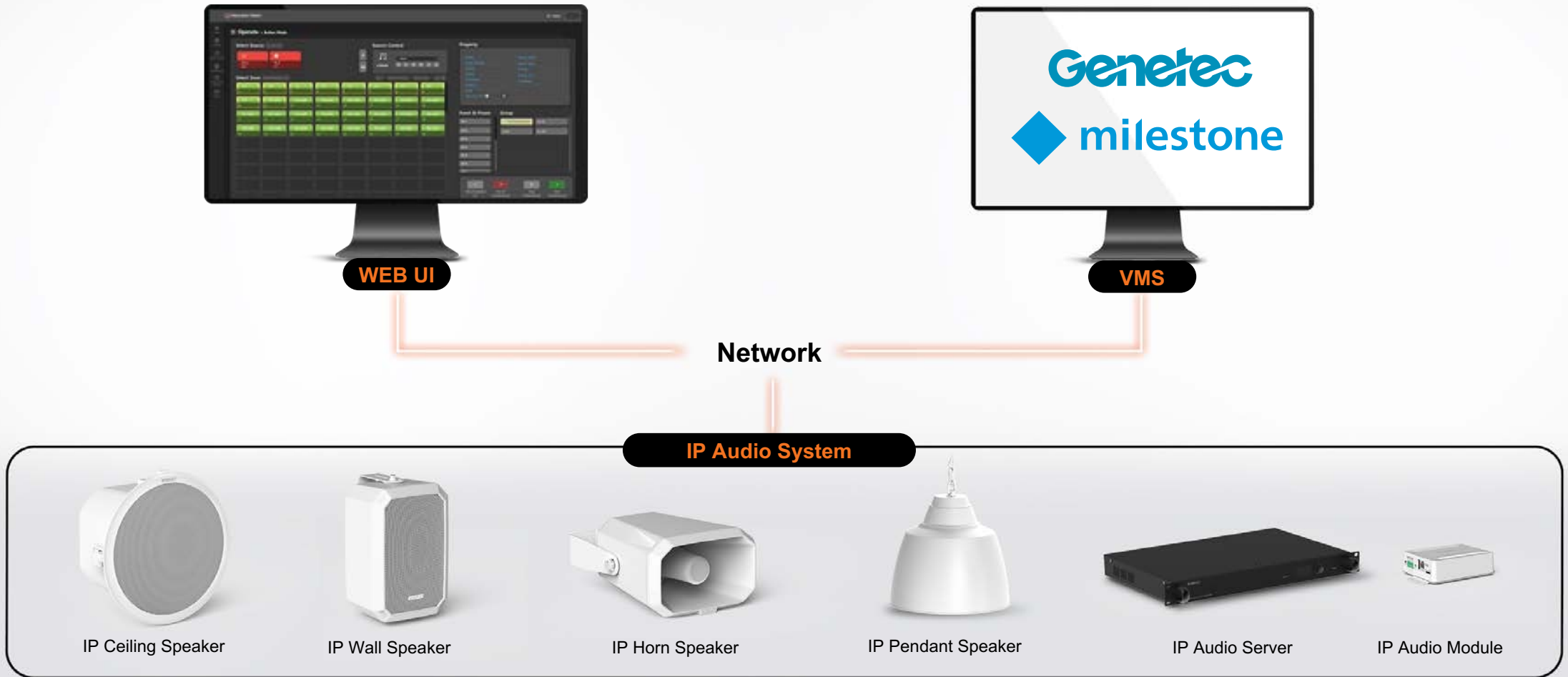


2. Main Features

- 2-1. System Overview
- 2-2. IP Speakers
- 2-3. IP Audio Module
- 2-4. GUI of Main features
- ※ Cost Effective Installation

2. Main features

2-1. System Overview



2-2. Main features

2-2. IP Speakers



All-In-One
Purely Standalone



PoE & PoE+
Dual Support



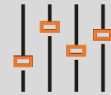
TTS
Text To Speech



Monitoring
Status checking



Scalability
Small to big



Integration
With analog system



SIP
PBX integration



Scheduler
Day, Week, Month and Year

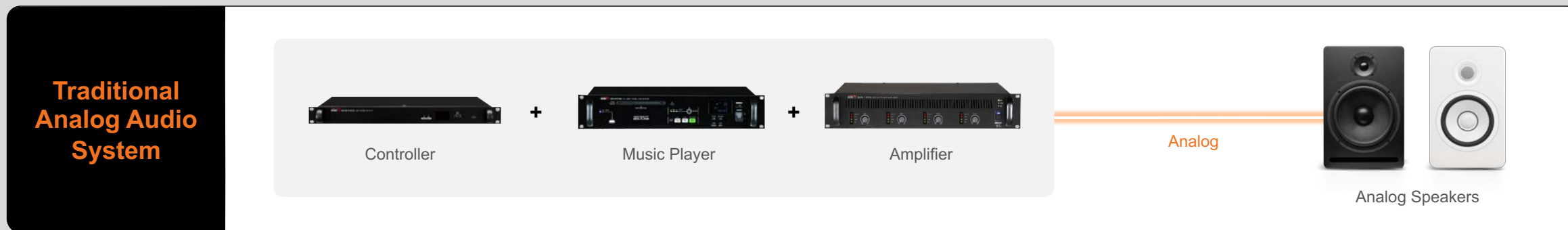


Storage
In/External storage

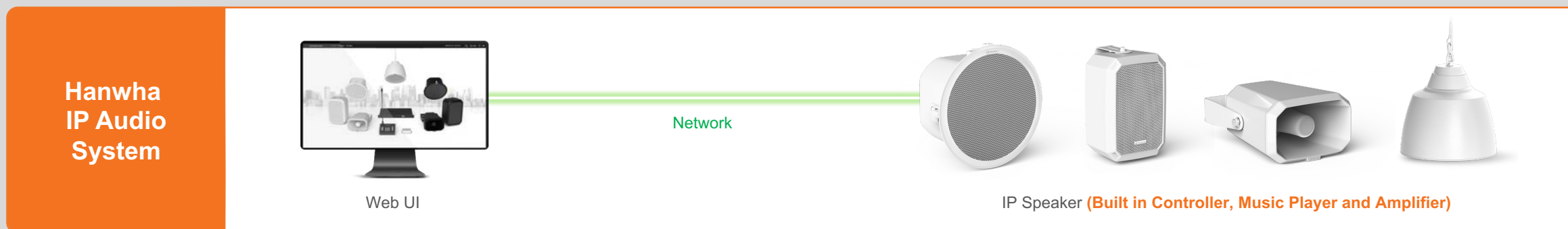


2-2. Main features for IP Speakers

(1) 4-In-One product



VS



Easier Deployment than Analog

4-In-One Standalone IP Speaker with built in Amplifier
No need to combine with any other audio devices to perform as an Audio System


2-2. Main features for IP Speakers

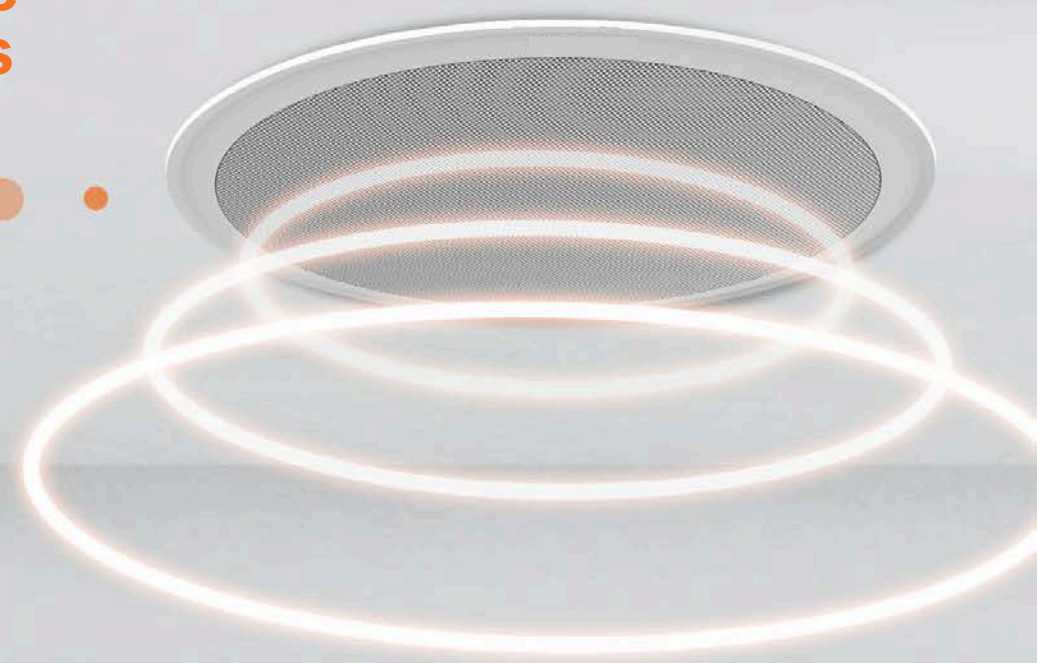
(2) TTS (Text To Speech)



Zero Panic Voice Announcements



 Paging Dr. Smith



More convenient announcements

Delivering announcements without a live voice but instead a programmed voice message via TTS
(Female/ Male : English (US/UK) | German | French | Spanish | Russian)

2-2. Main features for IP Speakers

(3) PoE & PoE+

96 dB

PoE

PoE+

Dual Support

100 dB

Higher
4dB

Flexible PoE Support

Choose either the PoE or PoE+ setting to suit your deployment.
Use PoE to save on network switch power budget in quieter environments or use PoE+, supplying higher SPL (Sound Pressure Level) for loud environments

2-2. Main features for IP Speakers

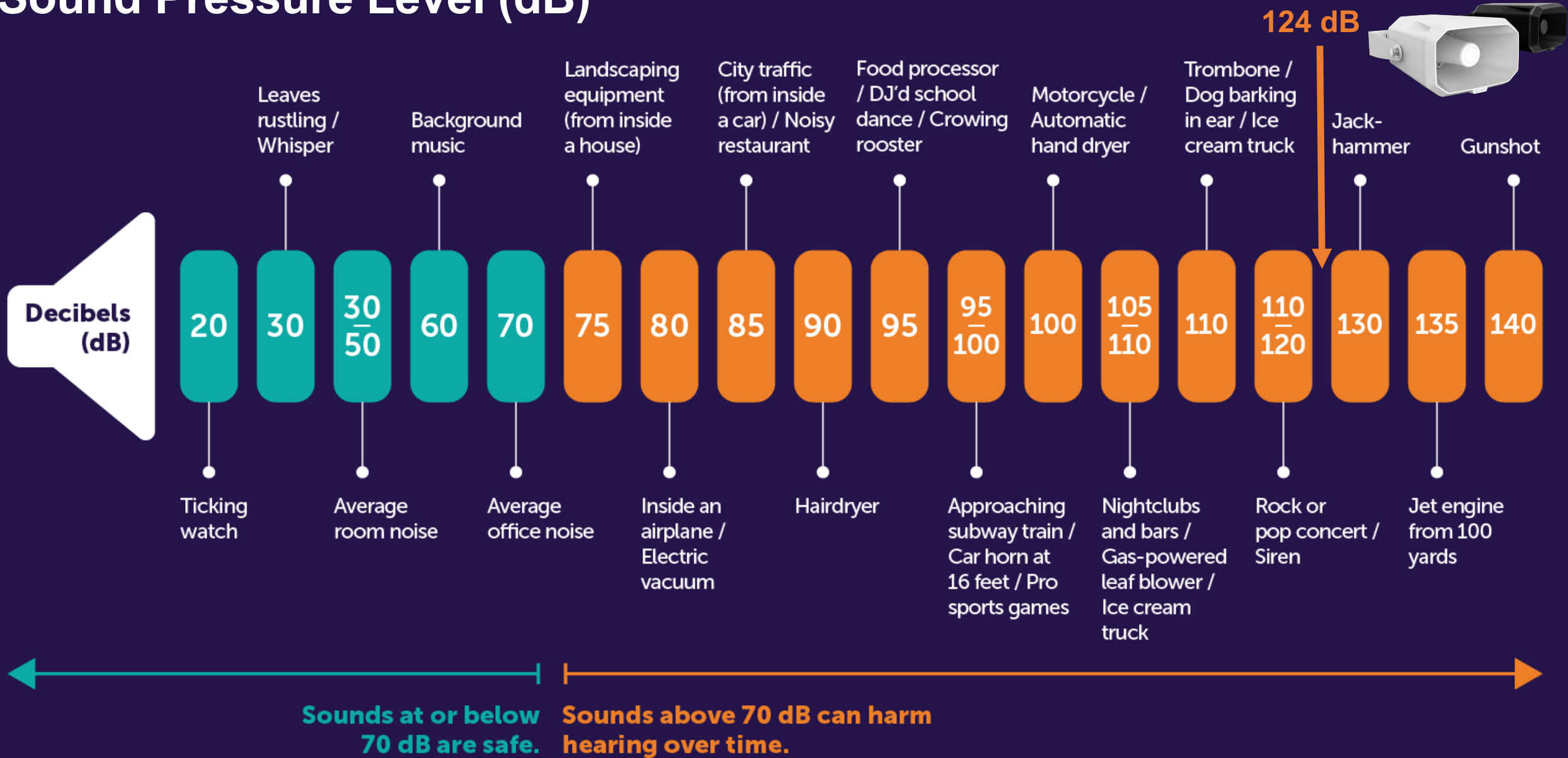
(4) Audio Output Monitoring



Monitoring of Speaker's Output

Monitor Speaker to confirm speaker's output status in the system
Users can simply check the speaker's status and listen in the IPAS web interface

Sound Pressure Level (dB)



2-2. Main features for IP Speakers

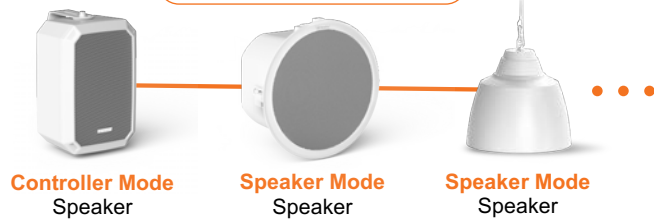
(5) Scalability

Small to Medium System



1~255
Speakers

With Speakers Only



Large System



256~512
Speakers

With Audio Server



Scalability from Small to Large

Deploy a Small to Medium IP Audio system with only speakers in Controller / Speaker mode
Deploy a Large IP Audio system with an Audio Server in Controller / Speaker mode

※ Controller/ Speaker mode = Master/ Slave Mode

2-2. Main features

(6) SIP Protocol



SIP Protocol



Communication with PBX phones

Supporting SIP protocol to use IP speakers with PBX phone system

2-2. Main features for IP Speakers

(7) Scheduler

Schedule 1 07:00 ~ 24:00

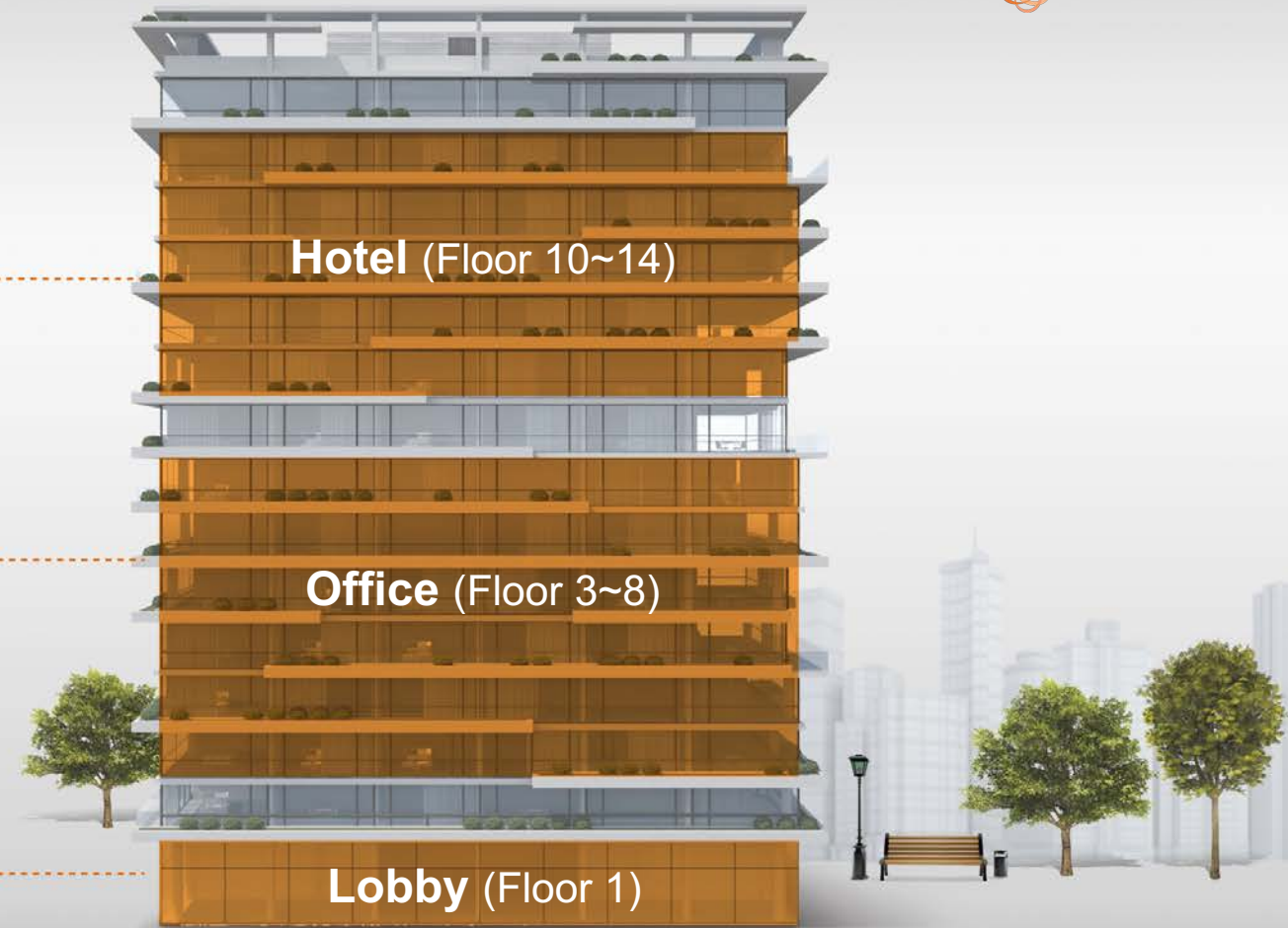
▶ BGM with Playlist 1

Schedule 2 11:30 ~ 13:00

▶ BGM during lunch time only

Schedule 3 09:00 ~ 19:00

▶ BGM with Playlist 2



Various Schedule Management

Play BGM and Announcements from different speakers or groups at different times
Scheduling available on daily, weekly, monthly and yearly basis

2-2. Main features for IP Speakers

(8) Storage



Internal 1GB



Internal 1GB



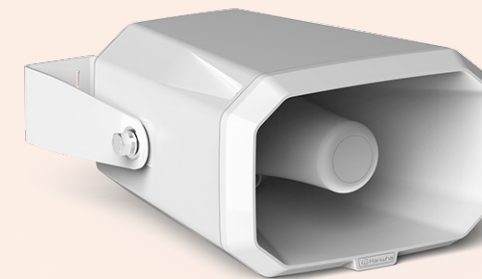
Internal 1GB



Internal 1GB



Up to
32GB



Internal 1GB

Internal storage & Expansion

1GB of internal storage for Background Music (mp3, WAV) or Text To Speech files (TTS)
Micro SD card slot for expansion of BGM & TTS files, up to 32GB

2. Main features for IP Audio Module

2-3. IP Audio Module



Integration with Analog Speakers

Analog speaker support for integrating existing analog speakers with the IP Audio System

2. Main features for IP Audio Module

2-3. IP Audio Module



Integration with Analog Systems

Using the IP Audio module allows integration between an Analog Audio System and the IP Audio System
 IP Audio Module supports a 1:1 deployment with Analog Speakers

2-4. GUI of Main features

(1) TTS management

The screenshot shows the 'Operation Setting > TTS File Management' page. It features a 'Languages' dropdown set to 'English (United States)', a 'Male/Female' dropdown set to 'Male', and a text input field containing an announcement. A 'TTS file list' table is also visible, showing two entries: 'TTS1' and 'Family day Announcement'.

Languages

English (United States)

Male/Female

Male

Text for Announcement

Hi, everyone, today is Wednesday so it's family day.
All of employees should leave the office before 5 PM and have a lovely time with your family

TTS file list

Number	Title	Contents	Play time
1	TTS1		00:07.21
2	Family day Announcement		00:10.69

2-4. GUI of Main features

(2) Annual Scheduler

The screenshot displays the 'Annual Scheduler' interface in the Hanwha Vision system. On the left, a calendar view shows dates from 26 to 31. Two callouts point to specific dates: 'TTS or BGM' points to the 3rd and 'List of TTS or BGM' points to the 24th. On the right, a 'Setup' window is open, detailing the configuration for 'Scheduler1'. The setup includes date and time selection (2023-07-12, 09:00-09:23), a repeat schedule (Everyday, Yearly), source selection (BGM Scourse, IP 192.168.1.99), zone selection (Zone1, Zone2, Zone3), and a list of sound sources with durations and repeat counts. Additional settings like priority, volume, date format, and title color are also visible.

System Setting > Annual Scheduler

Calendar view: Sun, Mon, 26, 27, 3, 10, 11, 17, 18, 24, 25, 31.

Setup

Name: Scheduler1

Date & Time: 2023-07-12, 09:00 - 09:23

Repeat: Sun, Mon, Tue, Wed, Thu, Fri, Sat, ALL. Repeat option (Extension): Year

Source: 2, BGM Scourse, IP Address: 192.168.1.99

Zone: Zone1, Zone2, Zone3, Unselect All

Source sound: MP3 Play

- 1. [03:55] 01 Sing.mp3
- 2. [04:23] 06 Perfect.mp3
- 3. [04:19] 05 Small Bump.mp3
- 4. [04:59] 03 I See Fire.mp3
- 5. [04:40] 04 How Would You I

Number of repeats: 1

Source full-time playback:

Etc: Priority 3000, Volume 70, Date format YYYY-MM-DD

Title Color: Select [Color palette]

Buttons: Save, Close, Stop

Footer: © 2023 Hanwha Vision Co., Ltd. All rights reserved. English | Connection Time 17:04:49 | Operation Time 00 Days 03:47:27 | 5:07 PM 2022-07-12

(3) Audio Monitoring

Hanwha Vision ID : admin Logout

Operate > Audio Monitoring

Monitoring Screen

Graphic bar showing speaker's output signal

Monitoring Device (Registered count :2)

Device Name	Device Location	IP address	Status	Play Status
SPA-W100	-	192.168.1.74	●	●
SPA-C100	-	192.168.1.73	●	●

Status
- Green : Online
- Orange : Offline

Play Status
- Green : Playing
- Orange : Not Playing

1

(4) Device Monitoring

Source Device SPA-C100 (Registered count : 2)

Device Name ^	Device Location ^	IP address ^	Status	Source Name	Source Type	Source Priority	Source Icon
SPA-D1000	Ground Floor2	192.168.1.97	●	TTS Source	TTS	3000	TTS
SPA-D1000	Ground Floor3	192.168.1.99	●	BGM Source	BGM	3000	♪

*** Status**
- Green : Online / Playing
- Orange : Offline / Not Playing

Output Device SPA-C100 (Registered count : 3)

Device Name ^	Device Location ^	IP address ^	Status	Output	Mute	Volume	Level Meter
SPA-C100	Ground Floor1	192.168.1.98	●	●	Mute	73	Level Meter
SPA-D1000	Ground Floor2	192.168.1.97	●	●	Mute	62	Level Meter
SPA-D1000	Ground Floor3	192.168.1.99	●	●	Mute	38	Level Meter

2. Main features

※ Cost Effective Installation

PoE Extender Camera + IP Speaker

IP Speakers can be connected to PoE Extender Cameras
Receiving PoE power from XNV-6081RE/8081RE
Reducing installation cost and increasing capability



IP Speaker

PoE out



PoE Extender Camera
XNV-6081RE/8081RE

PoE+ in

Only 1
Cable

3. Specification

3-1. IP Speaker Specifications

3-2. Audio Server Specification

3. Specification

3-1. IP Speaker specs

Category		Speakers				
		Ceiling	Pendant	Wall	Horn	Audio Module
		SPA-C110B/W	SPA-P100B/W	SPA-W100B/W	SPA-H100B/W	SPA-D1000
Line output	Frequency Response	20Hz ~ 20kHz	130Hz~20kHz	20Hz ~ 20kHz	650Hz~5.3kHz	-
Power Amp	Amplifier	Built in 10W Class D				
Network	Ethernet	10/100 Base-T				
Memory	Internal Memory	1 GB				
	Micro SD Card Slot	SDHC up to 32GB				
General	Operating Temperature	-20 ~ +50°C (-4°F ~ +122°F)	-20 ~ +50°C (-4°F ~ +122°F)	-20 ~ +50°C (-4°F ~ +122°F)	-35°C ~ +55°C (-31°F ~ +131°)	-20 ~ +50°C (-4°F ~ +122°F)
	Operating Humidity	10~85% RH (Non-Condensing)	10~85% RH (Non-Condensing)	10~85% RH (Non-Condensing)	10~85% RH (Non-Condensing)	10~85% RH (Non-Condensing)
	IP code	-	-	IP54	IP66	-
Power	PoE PoE+	PoE (IEEE 802.3 af type 1 Class 3) PoE+(IEEE 802.3 at type 2 Class 4)				
Audio	Audio Compression	WAV, MP3 in mono/stereo from 64 kbps to 320 kbps				
Speaker	Max. Sound Pressure Level	100dB	101dB	101dB	124dB	-
	Sensitivity (1Watt)	90dB	91dB	90dB	111dB	-
	Multi-source Dynamic PA control	Multi-source up to 48 (Multicast) (Audio 24CH + Mic 24CH) Up to 256 Zone Control (Multicast) Up to 20 Zone Control (Unicast) Up to 255 Groups				
	TTS	English(US, UK), German, French, Spanish, Russian				

3. Specification

3-1. IP Speaker specs



SPA-C110B/W (US only)

Category	Specification
Frequency Response	20Hz ~ 20kHz
Amplifier	Built in 10W Class D
Internal Memory	1 GB
Power	PoE (IEEE 802.3 af type 1 Class 3) PoE+(IEEE 802.3 at type 2 Class 4)
Max. Sound Pressure Level	100dB
Multi-source Dynamic PA control	Multi-source up to 48 (Multicast) (Audio 24CH + Mic 24CH) Up to 256 Zone Control (Multicast) Up to 20 Zone Control (Unicast) Up to 255 Groups
TTS	English(US, UK), German, French, Spanish, Russian

IP Ceiling Speaker

3. Specification

3-1. IP Speaker specs



SPA-P100B/W

Category	Specification
Frequency Response	130Hz~20kHz
Amplifier	Built in 10W Class D
Internal Memory	1 GB
Power	PoE (IEEE 802.3 af type 1 Class 3) PoE+(IEEE 802.3 at type 2 Class 4)
Max. Sound Pressure Level	101dB
Multi-source Dynamic PA control	Multi-source up to 48 (Multicast) (Audio 24CH + Mic 24CH) Up to 256 Zone Control (Multicast) Up to 20 Zone Control (Unicast) Up to 255 Groups
TTS	English(US, UK), German, French, Spanish, Russian

IP Pendant Speaker

3. Specification

3-1. IP Speaker specs



IP Wall Speaker

SPA-W100B/W

Category	Specification
Frequency Response	20Hz ~ 20kHz
Amplifier	Built in 10W Class D
Internal Memory	1 GB
IP code	IP54
Power	PoE (IEEE 802.3 af type 1 Class 3) PoE+(IEEE 802.3 at type 2 Class 4)
Max. Sound Pressure Level	101dB
Multi-source Dynamic PA control	Multi-source up to 48 (Multicast) (Audio 24CH + Mic 24CH) Up to 256 Zone Control (Multicast) Up to 20 Zone Control (Unicast) Up to 255 Groups
TTS	English(US, UK), German, French, Spanish, Russian

3. Specification

3-1. IP Speaker specs



IP Horn Speaker

SPA-H100B/W

Category	Specification
Frequency Response	650Hz ~ 5.3kHz
Amplifier	Built in 10W Class D
Internal Memory	1 GB
IP code	IP66
Power	PoE (IEEE 802.3 af type 1 Class 3) PoE+(IEEE 802.3 at type 2 Class 4)
Max. Sound Pressure Level	124dB
Multi-source Dynamic PA control	Multi-source up to 48 (Multicast) (Audio 24CH + Mic 24CH) Up to 256 Zone Control (Multicast) Up to 20 Zone Control (Unicast) Up to 255 Groups
TTS	English(US, UK), German, French, Spanish, Russian
Supported Strap for Poles	SBP-060S (to suit poles between 80~160mm in diameter)



3. Specification

3-1. IP Audio Module specs



SPA-D1000

Category	Specification
Amplifier	Built in 10W Class D
Internal Memory	1 GB
Power	PoE (IEEE 802.3 af type 1 Class 3) PoE+(IEEE 802.3 at type 2 Class 4)
Multi-source Dynamic PA control	Multi-source up to 48 (Multicast) (Audio 24CH + Mic 24CH) Up to 256 Zone Control (Multicast) Up to 20 Zone Control (Unicast) Up to 255 Groups
TTS	English(US, UK), German, French, Spanish, Russian

IP Audio Module

3. Specification

3-2. Audio Server specs



IP Audio Server

Category		Audio Server
		SPA-S1000
Network	Ethernet	10/100 Base-T
Power	Power	AC 120-240V, 50/60Hz, 10W DC 24V, 350mA
General	Operating Temperature	-10 ~ +40°C (14°F ~ +104°F)
	Operating Humidity	10~85% RH (Non-Condensing)
Speaker	Multi-source Dynamic PA control	Multi-source up to 48 (Multicast) (Audio 24CH + Mic 24CH) Up to 512 Zone Control (Multicast) Up to 20 Zone Control (Unicast) Up to 255 Groups

Installation solutions



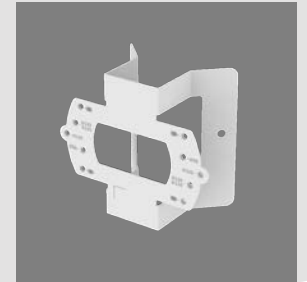
Installation solution

SBD-140KMB

Corner Mount



Light weight stainless steel corner mount compatible with: QNV-C8011R/C8012/C9011R, QNV-C8083R/C9083R, QND-6011/6021, QND-8011/8021, QNF-8010/9010, QND-6012R(1)/6022R(1)/6072R(1)/6082R(1), QND-7012R/7022R/7082R, QNE-8011R/8021R, LND-6012R/6022R/6072R, ANE-L6012R/L7012R"



SCL-30

Extension cable for remote head lens

Extension cable for remote head lens, 3m (9.84Ft), compatible with: PNM-9000QB, XNB-6002, SLA-T4680A, SLA-T4680VA, SLA-T2480A, SLA-T2480VA, SLA-T1080FA, SLA-T2880BA, SLA-T4680DA, SLA-T4680DSA



Installation solution

SPB-150CMI & SBP-300CMI

Ceiling Mount – 150mm and 300mm (w/o conduit holes)

Compatible with: Hanging caps

SBP-120HMW/140HMW/160HMW1/180HMW1, etc

SBP-300CMI will
replace SBP-300CMW



SBP-900CMW

Ceiling Mount – 900mm (with conduit holes)

Compatible with: Hanging caps

SBP-120HMW/140HMW/160HMW1/180HMW1, etc



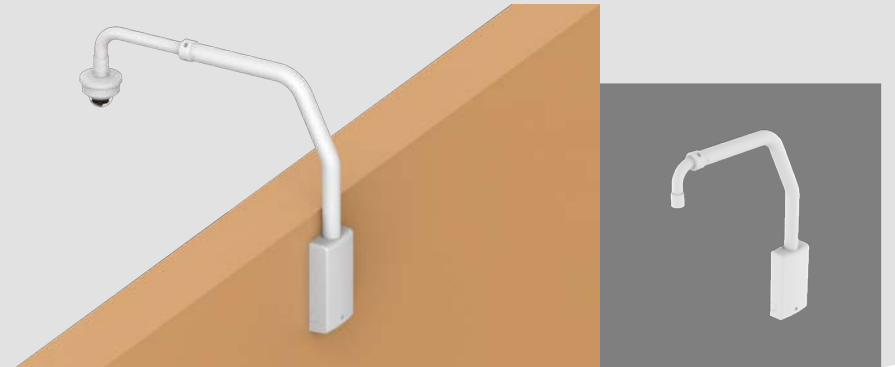
Installation solution

SBP-156LMW1

Telescopic Parapet Mount

Compatible with: Hanging caps
SBP-120HMW/140HMW/160HMW1/180HMW1, etc

Does Not Include
3 Pin Adapter for PTZ



SBP-300CMTW

Telescopic Ceiling Mount (with conduit holes)

Compatible with: Hanging caps
SBP-120HMW/140HMW/160HMW1/180HMW1, etc



Installation solution

SHP-1563FPW

Plenum Flush Mount

Replaces SHP-1560FPW

Plenum rated PTZ-Plus flush mount, white color. Compatible with XNP-9250/9250R/8250/8250R/6400/6400R, QNP-6320R/6250R, XNP-C6403/C8253/C9253, XNP-C6403R/C8253R/C9253R



SHP-1563FW

Flush Mount

Replaces SHP-1560FW

PTZ-Plus flush mount, white color. Compatible with XNP-9250/9250R/8250/8250R/6400/6400R, QNP-6320R/6250R, XNP-C6403/C8253/C9253, XNP-C6403R/C8253R/C9253R

